



CEILING
LIGHTING
AMBIENCE

projects.



Photos: Eric Peter / Bruce T. Martin

LOGAN INTERNATIONAL AIRPORT, BOSTON

United States of America



> Products: Customized metal ceilings and wall claddings

- Left: The acoustically effective metal ceiling extends across three levels, following the horizontal and vertical rounded forms of the roof, ultimately merging seamlessly at the ends of the terminal.
- Top left: Curved panels allow the metal ceilings at the gate piers to transition smoothly into wall claddings.

The Terminal E at Logan International Airport in Boston, Massachusetts combines innovative design with functional elegance.

A key feature is its striking acoustical metal ceiling, spanning three levels and following the terminal's curved architecture. Made of over 2,000 precision-fit components, including backlit perforated panels, it was designed for efficient installation without scaffolding.

Using precise BIM modeling, the complex project was carefully coordinated and continuously adapted during construction. The result is a 100,000m² terminal that excels in architecture, sustainability, and passenger comfort.



Photo: Aram Andersson

THE BOND, SYDNEY

Australia



> Product: Metal ceiling / System S4A

- Flexible design options
- High NRC rating possible
- Available non-perforated or perforated with black acoustic fleece. RG-L15 perforation [NRC = approx. 0.70] and RG-L08 "Pico Point" Microperforation [NRC = approx. 0.60] as standard

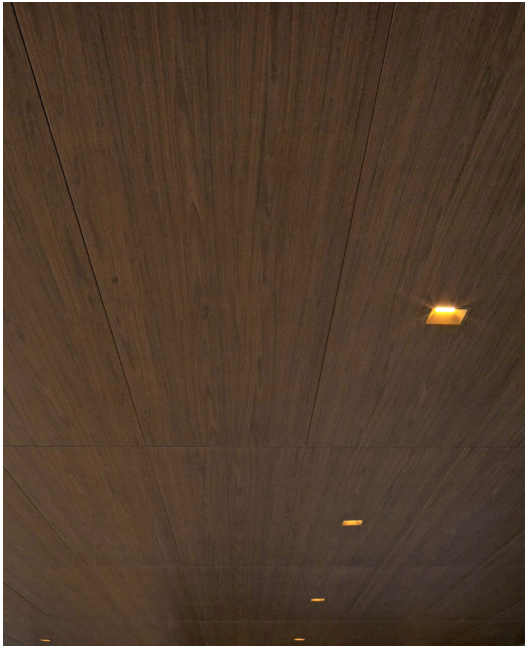
The Bond is an innovative six-storey timber-framed office building located in a suburban business park approximately 30km from Sydney. The main objective of this project was to demonstrate the viability of sustainable workplace buildings in a suburban environment. durlum supplied the corridors of the building with rectangular metal panels in the acoustically effective S4 hook system. The panels range in length from 1315mm to 2233mm and were customized to fit the various angles of the corridors throughout the building. A total of 240 different panel types and 565 individual panels were installed on the six floors of the building.



Photo: Eric Laignel

MOËT HENNESSY, NEW YORK

United States of America



> Product: Metal ceiling / System S7

- Can be dismantled easily and without the need for tools
- Suitable for outdoor applications [S7 TAIFUN]
- The integration of partitions is possible
- Available non-perforated or perforated with black acoustic fleece. RG-L15 perforation [NRC = approx. 0.70] and RG-L08 "Pico Point" Microperforation [NRC = approx. 0.60] as standard

Exquisite exclusivity: Moët Hennessy, a leading provider of luxury wines and spirits, moved into its new offices in the famous 7 World Trade Center. The metal ceilings supplied by durlum complement this business venue perfectly. Printed with dur-GRAPHICS in an upscale walnut texture, the rectangular metal panels imbue the elevator lobby with a welcoming and at the same time extravagant atmosphere. In the adjacent reception and bar area, the printed elements merge with ceiling panels powder-coated in khaki bronze. This creates a harmonious ceiling pattern that skilfully highlights the different areas and blends seamlessly into the other interior design features. To improve the acoustics, the ceiling elements were perforated and lined with fleece.



Photo: Thomas Krauss

CHÄSIMATT, ROTKREUZ

Switzerland



➤ **Product: S7 EXTERIOR rail channel system**

- Easy to disassemble from below
- Face-end joint measuring 10mm

In the heart of the small Swiss town of Rotkreuz, the Chäsimmatt development is creating a lively new district that combines modern design with high-quality residential and working accommodation, together with spaces for encounters and dialogue.

Particular attention was paid to the design of exterior areas, especially the ceiling structures that define the character of this new part of town. This hard-wearing metal ceiling system is ideally suited to exterior spaces, able to withstand high wind loads and resistant to corrosion, and is powder-coated in 13 different RAL colors, making it an eye-catching feature with long-lasting durability.



Photo: Aracn Anderson

ALTIS CONSULTING, SYDNEY

Australia



> Product: Metal ceiling / System S7

- Can be dismantled easily and without the need for tools
- The integration of partitions is possible
- Available non-perforated or perforated with black acoustic fleece. RG-L15 perforation [NRC = approx. 0.70] and RG-L08 "Pico Point" Microperforation [NRC = approx. 0.60] as standard

The new Altis Consulting headquarters in Sydney combines modern architecture and a clear brand identity to create an inspiring working environment. The aim of the project was to create a high-quality working environment that is both representative and comfortable.

In the reception and communication area, custom-made ceiling elements from the S7 metal ceiling system in a gold-colored, perforated design create striking accents.

Another central element is the open-plan 'town hall' area, which promotes communication and innovation. Here, too, a metal ceiling solution was used, perfectly matching the ceiling design of the lobby. The low height of the ceiling cavity posed a particular challenge, requiring a custom-developed suspension system.



ONE GREAT CUMBERLAND PLACE, LONDON

Great Britain



> Product: dur-SOLO

- Versatile cloud ceiling
- Ideal for improving room acoustics
- Can be dismantled easily and without tools
- Optionally combinable with core-activated concrete ceilings

One Great Cumberland Place is located in the heart of London, where an office complex from the Twenties is being transformed into a versatile multi-purpose building awarded the BREEAM 'Excellent' certificate, combining modern offices with retail space at street level.

Powder-coated in white and designed to meet specific customer requirements, these galvanized steel dur-SOLO cloud ceilings are an integral part of the modern interior design. With a perforated open area of 56% and fleece lining to significantly enhance acoustics in activity-based work areas, the elements – together with custom-built rounded corner frames – support the goal of creating flexible, adaptable working environments that encourage collaboration and innovation.



Photo: © James Kong

GRAVIT8 LIFESTYLE HUB, KLANG

Malaysia



> Product: POLYLAM

- Vertical baffle ceiling that offers a versatile range of design options
- Linear lighting and downlights can be integrated perfectly
- Also available in a hingeable and movable version

In January 2021, the Pier8 shopping center in Gravit8 won the 'Low Rise Commercial Building Award – Gold Category' from PAM [Pertubuhan Akitek Malaysia]. The basic skeletal shape of durlum's vertical metal baffles surrounding the supporting pillars extends into the ceiling design. The sinuous curves of the ceiling baffles create the effect of a cloud pattern that admits daylight through ten oval skylights while also providing shade. Combined with a large salt water aquarium, the harmonious appearance of the main foyer exudes tropical maritime flair.



Photo: Roy Cavicchio

LINCOLN AVENUE, SOUTH BRONX, NEW YORK

United States of America



> **Product: LOOP** [left]

- Ceiling pattern appears endless with its concealed joints
- PUNTEO-J60 downlight blends harmoniously in the round apertures of the ceiling panels
- Can also be supplied as a cooling ceiling

> **Product: GEO** [top]

- Decorative open-cell ceiling, available in many colors
- LED downlights can be integrated

Affordable housing in a peaceful and safe environment in the heart of Mott Haven in the Bronx would have seemed unimaginable for many years. 'Lincoln at Bankside', part of the larger Bankside project, offers modern residential properties with fitness centers, community areas, and landscaped grounds.

The timeless metal ceiling GEO in the lobby, emphasizes the space's expansive nature and creates an inviting atmosphere. On the upper floors, the green powder-coated LOOP design ceiling provides a visually and acoustically pleasing environment.

Consequently, the Lincoln Avenue residence, through its synthesis of tranquility and a bond with the natural world, successfully creates a calm and restorative space within the vibrant metropolis of New York.



Photo: Thomas Krauss

BUBENBERGZENTRUM 8, BERN

Switzerland



> Product: PULSA

- Ceiling-lighting combination
- Unique designs for special ambiance

Directly beside the picturesque old town of Bern, a UNESCO World Heritage Site, lies Switzerland's second largest railway station, which is being expanded with a new underground station as the existing one has reached its capacity limits. As part of the project, a new station underpass and main access point at the Bubenbergzentrum are being created.

Sections of the existing structure, including the projecting roof, are being renovated with a bespoke illuminated ceiling featuring an angular, irregular perforation that appears to be endless. Our TANGENTA-Q24 LED light line backlights the metal ceiling and bathes the outside area in a pleasant and homogeneous light while our PUNTEO-N spots create individual highlights in the ceiling pattern.

- 07 GRUPA ŻYWIEC
- 06 GRUPA ŻYWIEC
- 05 ALLEN & OVERY
- 04 AKADEMIA MDDP
- 03 _____
- 02 _____
- 01 _____



BROWARY WARSZAWSKIE, WARSAW

Germany



> Product: LIVA

- Different louvre heights can be combined
- Each row of blades can be folded down and removed individually

When the Haberbusch & Schiele brewery was founded in Warsaw's Wola district approx. 175 years ago, it quickly became one of the most significant breweries in Europe before being destroyed during World War Two and eventually forgotten. A few years ago, an investment company set out to revitalize the former brewery site.

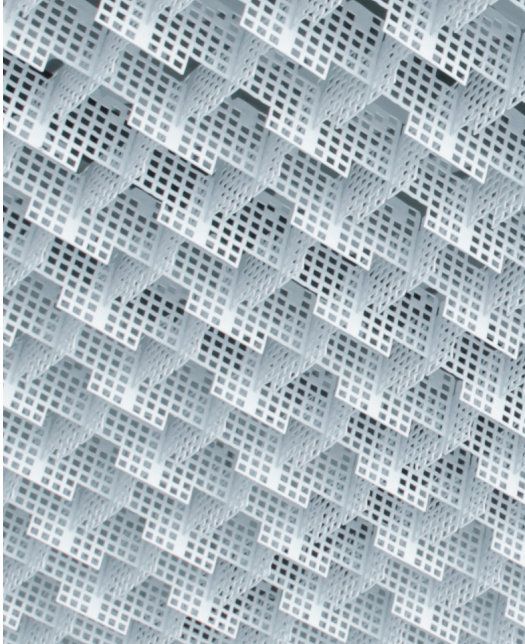
The architecture skilfully reflects the historical identity of this site and transports it into the modern era. For example, with a reference to the barrel ceiling of the old brewery, our LIVA open-cell ceiling was used to create a curved ceiling in the outside area of a new office building. This was achieved using a specially developed substructure. In a derivative form, this convex open-cell ceiling also features on the ground floor, with a level version of LIVA in the lift areas of all seven upper floors.



Photo: Urner Kantonalbank

URNER KANTONALBANK, ALTDORF

Switzerland



> Product: TICELL-N + LUMEO-R

- MEPs can be incorporated in the ceiling void
- Optimum light permeability

Altdorf – the main town in the Swiss canton of Uri and the founding location of the Urner Kantonalbank – is located to the South of Lake Lucerne. For the new head office of the bank durlum supplied an appropriately designed ceiling solution, in part with integrated luminaires.

The multi-directional TICELL-N open-cell ceiling extends across the entrance area, the cafeteria and the washroom areas, showcasing the modern design of these interior spaces with a playfully light touch. Seemingly 'braided', the aluminum surface of this ceiling is structured using a specialist process so that the stamped edges reflect the flow of light. This achieves optimum light permeability. The light and airy character of the new building is enhanced by LUMEO luminaires located between the concrete and open-cell ceiling.



Photo: Felix Meyer

MEDI, BAYREUTH

Germany



› **Product: STAR 3** [top left]

- Linear open-cell ceiling
- Ideal for integrating lighting
- Pre-fabricated, hinged panels
- As an option, panels can be foldable

› **Product: TICELL** [left]

- LED spots can be integrated
- Pre-fabricated, hinged panels
- The cell ratio enables TICELL to provide optimal light permeability

With its new head office in Bayreuth, medi GmbH & Co. KG, a medical aids manufacturer, has created an open architectural concept to encourage employee dialogue while maintaining central workspaces and quiet break-out areas.

The ceiling and lighting solutions underline this architectural concept. The 'woven' TICELL open-cell ceiling is used outdoors as well as indoors. In combination with the special version of the TANGENTA luminaire, this ceiling-lighting integration creates a unique look that gives the workspaces a modern, soothing lightness.

In the washroom and toilet areas, the linear STAR 3 open-cell ceiling with its clearly defined edges sets architectural accents and creates a unique appearance.



Photo: David Marthinsen

MAIN BAD BORNHEIM, FRANKFURT

Germany



> Product: STARLAM

- Vertical installation is possible
- Individual panels are pre-fabricated
- As an option, panels can be hingeable [with support rail U 94]

With the Main Bad Bornheim, Frankfurt has gained a contemporary family pool complex that combines sport, recreation, and relaxation. Covering around 900m² of water surface, the facility offers a variety of swimming, leisure, and sauna areas.

Clean lines, generous glazing, and light materials create an open, welcoming atmosphere. A key design feature is the use of STARLAM ceiling systems in both interior and exterior areas. Their open, decorative structure adds rhythm and clarity to the architecture, while custom finishes in RAL 9006 and Pearlgold RAL 1036 highlight the building's linear design concept.

The Main Bad Bornheim stands as a model project in contemporary municipal pool design – functional, aesthetic, and sustainable.

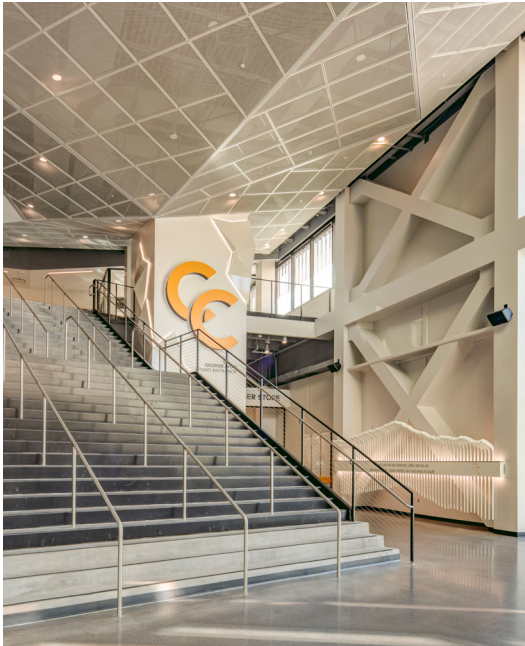


Photos: Greg Poland

ROBSON

ED ROBSON ARENA, COLORADO SPRINGS

United States of America



> Product: RHOMBOS

- Expanded metal ceiling for lightness in architecture
- Elegant design with a lot of possibilities
- Suitable for integration of the LED-based lighting solutions from durlum
- The lighting channel OMEGA can also be used as substructure.

The transparent architecture of the ultra-modern, sustainable Ed Robson Arena echoes elements of the surrounding buildings and mountains. A highlight is the light-permeated and spacious entrance area with its faceted and luminous expanded metal ceiling. Large white triangular surfaces are arranged in opposing angles, framed by narrow lighting channels that complement the dynamic character of the ceiling and make it appear almost weightless. At the same time, these lighting channels form part of the complex and technically ingenious substructure.

Dark-grey expanded metal ceilings in other areas of the arena also underline the visual lightness and transparency of this new arena.



Photo: Lisa Whiteaw Photography

UNIVERSITY, TORONTO MISSISSAUGA

Canada



> **Product: Special baffle system and linear luminaires**

- Design ceiling and lighting combination
- Individual colors or printing designs
- Available non-perforated or perforated with black acoustic fleece.

Mississauga, lying about 30 kilometers to the West of Toronto, is home to the second largest location of the University of Toronto. In a comprehensive renovation project, one of the oldest buildings on campus gained an open, new meeting point with seating, new dining facilities and foyer areas. To assist in this transformation, durlum supplied its POLYLAM vertical baffle system as a special profile for the integration of linear luminaires. The ingenious arrangement of the baffles results in a triangular design that imbues the ceiling with an open character and that uses skylights to deliver daylight. In places where no linear lighting is integrated in the vertical baffles, a blind cover with a wood finish sets a colorful counterpoint, highlighting the triangular design.



MUSEUM AT THE GATEWAY ARCH, ST. LOUIS

United States of America



> Product: Rectangular metal panels and linear tube ceiling

- Metal panels as a custom solution [similar to S7]
- Linear, extruded aluminum tubes as a specialist solution in various dimensions

A real eye-catcher, even from a distance: The Gateway Arch, also known as the "Gateway to the West". This impressive arch is the central structure in the Jefferson National Expansion Memorial, a monument in St. Louis, in the US state of Missouri.

The entrance foyer, which can be accessed from the adjacent park, guides visitors into the subterranean museum. Slightly curved and tapering down towards the back, mat-lined rectangular ceiling panels made of highly reflecting aluminum create the suspended ceiling. Aluminum tubes with a diameter of about 76mm are suspended from a specially designed support system.

The light in these tubes is reflected off the suspended ceiling, immersing the entire area in a diffuse natural light.



Photo: Metropolitan Transportation Authority

FULTON CENTER, NEW YORK

United States of America



> Product: Daylight reflecting panels

- Different, three-dimensional rhombic and triangular-shaped daylight reflecting panels suspended in a net of steel cables
- Highly reflecting aluminum surface which reflects 95% of natural light
- Individual perforation of each panel according to exact coordinate and design specifications

With the words "Welcome to the station of the 21st century", the largest traffic junction in New York reopened in Lower Manhattan, connecting nine subway lines. The center piece and attraction of the station is the worldwide unique "Sky Reflector Net."

An oval dome with skylight that is 24 meters high in the center of the station, reflects the natural sky into the inner of the atrium via a special construction. 952 perforated daylight reflecting panels by durlum suspended from a net of steel cables, guides the daylight from above down to two levels below the transit and retail area. Each one of the daylight reflecting panels was dimensioned and designed individually to meet the overall design, statics and light guidance of the project.

METAL CEILING SOLUTIONS

Follow us:

Instagram



LinkedIn



Newsletter



durlum USA LLC

251 Little Falls Drive / Wilmington / Delaware 19808 / USA / P: 1-800-204-3830 / E: infoUSA@durlum.com